

N FERA SU1



		SIZE		MAX. LOAD		MAX. AIR	RIM RANGE	STD. RIM	SECTION WIDTH		OVERALL DIAMETER		TREAD DEPTH		SLR	S/W
				lbs	kgs	psi			mm	inch	mm	inch	mm	/32"		
30 Series	****	275/30R19	96Y	1,565	710	50	9.0~10.0	9.5	278	10.9	649	25.6	7.5	9.5/32	307	BSW
	****	275/30R20	97Y	1,609	730	50	9.0~10.0	9.5	278	10.9	674	26.5	7.5	9.5/32	319	BSW
35 Series	**	215/35R18 XL	84Y	1,102	500	50	7.0~8.5	7.5	218	8.6	607	23.9	7.5	9.5/32	288	BSW
	**	225/35R18 XL	87Y	1,201	545	50	7.5~9.0	8.0	230	9.1	615	24.2	7.5	9.5/32	291	BSW
	*	245/35R18 XL	92Y	1,389	630	50	8.0~9.5	8.5	248	9.8	629	24.8	7.5	9.5/32	296	BSW
	*	255/35R18 XL	94Y	1,477	670	50	8.5~10.0	9.0	260	10.2	635	25.0	7.5	9.5/32	298	BSW
	*	225/35R19 XL	88Y	1,235	560	50	7.5~9.5	8.0	230	9.1	641	25.2	7.5	9.5/32	304	BSW
	*	235/35R19 XL	91Y	1,356	615	50	8.0~9.5	8.5	241	9.5	647	25.5	7.5	9.5/32	306	BSW
40 Series	*	255/35R19 XL	96W	1,565	710	50	8.5~10.0	9.0	260	10.2	661	26.0	7.5	9.5/32	311	BSW
	****	205/40R16	79W	963	437	51	7.0~8.0	7.5	212	8.3	570	22.4	7.5	9.5/32	267	BSW
	****	215/40R16	86W	1,168	530	50	7.0~8.5	7.5	218	8.6	578	22.8	7.5	9.5/32	270	BSW
	**	205/40R17 XL	84W	1,102	500	50	7.0~8.0	7.5	212	8.3	596	23.5	7.5	9.5/32	280	BSW
	**	215/40R17 XL	87W	1,201	545	50	7.0~8.5	7.5	218	8.6	604	23.8	7.5	9.5/32	284	BSW
		235/40R17 XL	94W	1,477	670	50	8.0~9.5	8.5	241	9.5	620	24.4	7.5	9.5/32	290	BSW
	***	245/40R17 XL	95W	1,521	690	50	8.0~9.5	8.5	248	9.8	628	24.7	7.5	9.5/32	293	BSW
	****	255/40R17 XL	94W	1,477	670	51	8.5~10.0	9.0	260	10.2	636	25.0	7.5	9.5/32	296	BSW
	**	215/40R18 XL	89Y	1,279	580	50	7.0~8.5	7.5	218	8.6	629	24.8	7.5	9.5/32	296	BSW
		225/40R18 XL	92Y	1,389	630	50	7.5~9.0	8.0	230	9.1	637	25.1	7.5	9.5/32	299	BSW
	*	235/40R18 XL	95Y	1,521	690	50	8.0~9.5	8.5	241	9.5	645	25.4	7.5	9.5/32	302	BSW
	45 Series	*	245/40R18 XL	97Y	1,609	730	50	8.0~9.5	8.5	248	9.8	653	25.7	7.5	9.5/32	305
*		255/40R18 XL	99Y	1,709	775	50	8.5~10.0	9.0	260	10.2	661	26.0	7.5	9.5/32	309	BSW
****		245/40R19 XL	98Y	1,653	750	50	8.0~9.5	8.5	248	9.8	679	26.7	7.5	9.5/32	318	BSW
****		195/45R15	78W	937	425	51	6.0~7.5	6.5	195	7.7	557	21.9	7.5	9.5/32	259	BSW
*		195/45R16	80W	992	450	51	6.0~7.5	6.5	195	7.7	582	22.9	7.5	9.5/32	272	BSW
*		205/45R16 XL	87W	1,201	545	50	6.5~7.5	7.0	206	8.1	590	23.2	7.5	9.5/32	275	BSW
****		225/45R16	89W	1,279	580	51	7.0~8.5	7.5	225	8.9	608	23.9	7.5	9.5/32	282	BSW
****		245/45R16	94W	1,477	670	51	7.5~9.0	8.0	243	9.6	626	24.6	7.5	9.5/32	289	BSW
***		205/45R17 XL	88W	1,235	560	50	6.5~7.5	7.0	206	8.1	616	24.3	7.5	9.5/32	288	BSW
**		215/45R17 XL	91W	1,356	615	50	7.0~8.0	7.0	213	8.4	626	24.6	7.5	9.5/32	292	BSW
*		225/45R17 XL	94W	1,477	670	50	7.0~8.5	7.5	225	8.9	634	25.0	7.5	9.5/32	295	BSW
		235/45R17 XL	97W	1,609	730	50	7.5~9.0	8.0	236	9.3	644	25.4	7.5	9.5/32	299	BSW
**		245/45R17 XL	99W	1,709	775	50	7.5~9.0	8.0	243	9.6	652	25.7	7.5	9.5/32	302	BSW
		225/45R18 XL	95Y	1,521	690	50	7.0~8.5	7.5	225	8.9	659	25.9	7.5	9.5/32	308	BSW
		235/45R18 XL	98Y	1,653	750	50	7.5~9.0	8.0	236	9.3	669	26.3	7.5	9.5/32	312	BSW
***		245/45R18 XL	100Y	1,764	800	50	7.5~9.0	8.0	243	9.6	677	26.7	7.5	9.5/32	315	BSW
****		255/45R18	103Y	1,929	875	50	8.0~9.5	8.5	255	10.0	687	27.0	7.5	9.5/32	319	BSW
50 Series			245/45R19 XL	102Y	1,874	850	50	7.5~9.0	8.0	243	9.6	703	27.7	7.5	9.5/32	328
	***	205/50R16	87W	1,201	545	51	5.5~7.5	6.5	214	8.4	612	24.1	7.5	9.5/32	283	BSW
	*	225/50R16 XL	96W	1,565	710	50	6.0~8.0	7.0	233	9.2	632	24.9	7.5	9.5/32	291	BSW
	*	215/50R17 XL	95W	1,521	690	50	6.0~7.5	7.0	226	8.9	648	25.5	7.5	9.5/32	301	BSW
	**	225/50R17 XL	98W	1,653	750	50	6.0~8.0	7.0	233	9.2	658	25.9	7.5	9.5/32	305	BSW
	***	235/50R18 XL	101W	1,819	825	50	6.5~8.5	7.5	245	9.6	683	27.3	7.5	9.5/32	321	BSW
	*	245/50R18 XL	104W	1,984	900	50	7.0~8.5	7.5	253	10.0	703	27.7	7.5	9.5/32	325	BSW
	*	205/55R16 XL	94W	1,477	670	50	5.5~7.5	6.5	214	8.4	632	24.9	7.5	9.5/32	291	BSW
55 Series	**	215/55R16 XL	97W	1,609	730	50	6.0~7.5	7.0	226	8.9	642	25.3	7.5	9.5/32	295	BSW
	**	215/55R17 XL	98W	1,653	750	50	6.0~7.5	7.0	226	8.9	668	26.3	7.5	9.5/32	309	BSW
	***	225/55R16	95W	1,521	690	51	6.0~8.0	7.0	233	9.2	654	25.7	7.5	9.5/32	300	BSW
***	235/55R18 XL	104W	1,984	900	50	6.5~8.5	7.5	245	9.6	715	28.1	7.5	9.5/32	330	BSW	

These data can be changed by the manufacturer without prior notice, and differentiated by regions.
 * Available at 4th Quarter of 2012, ** Available at 1st Quarter of 2013, *** Available at 2nd Quarter of 2013,
 **** Available at 3rd Quarter of 2013



NEXEN **NEXEN TIRE** www.nexentire.com

Sales Headquarter 3~4FL. FARMAX BLDG. 796-27 BANGBAE-DONG, SEOCHO-GU, SEOUL, KOREA ZIP CODE: 137-060
 TEL. 82-2-3476-2285~6 FAX. 82-2-3476-2205~6

Driving Tomorrow

N FERA S U1

ULTRA HIGH PERFORMANCE SUMMER



NEXEN NEXEN TIRE

Superior Driving!

Handles and grips perfectly in wet, with tires that feel intuitive!

Superb driving experience

The **Ultra High Performance** tire offers a powerful wet grip and stable cornering.

Excellent Braking

4 asymmetric grooves provide optimal road holding and perfect water drainage, providing unmatched braking performance. In particular, outstanding grip performance is achieved even under wet road conditions.

01

Excellent Handling

NFERASUI's specialized shoulder block and rib block offers stable performance and outstanding steering response during high speed cornering.

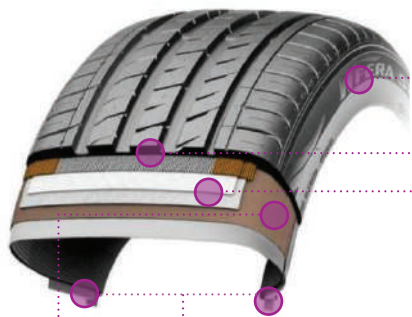
02

Long Lasting Tread Life

Product life-cycle is prolonged with the application of age-resisting new compound and tire profile preventing uneven wear.

03

Construction



High Modulus Carcass

Minimizes tire deformation and helps maintain tire's integrity to enhance driving stability.

Shock-absorbing Sidewall

Provides comfort by absorbing vibration from various road surfaces.

Endless, High strength Cap Ply

Ensures stability in high speed and improves durability.

High Tensile Steel Belts

Enhances braking function with optimized grip pressure and stress dispersion.

Jointless Bead Wire & High Tensile Bead Filler

Improves high speed stability and delivers better handling and steering response.

Compound



4G Compound Technology

- Improved durability
- Enhanced stability with better handling and steering response
- Increased treadwear
- Minimized rolling resistance

Pattern



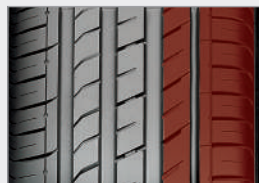
Excellent Wet Performance

Hydrophilic lateral Grooves efficiently remove water from the contact surface for excellent wet performance.



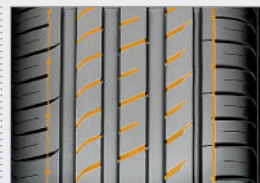
Efficient water drainage

Four asymmetric grooves (3 wide+ 1 semi) provide efficient water drainage for improved wet performance.



Maximum Grip During Cornering

Optimized shoulder block and rib in outer zone enhance grip for cornering and handling performance on wet and dry roads.



Intuitive and Precise Steering

Multiple 3D Edge Technology delivers optimum wet & dry grip for precise control through increased block stiffness and uniform pressure distribution.



Outstanding Straight Stability

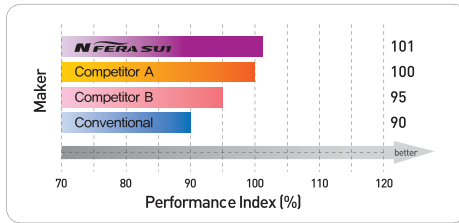
Continuous 3 center blocks with optimal stiffness distribution provide stability at a high speed.

N FERASUI

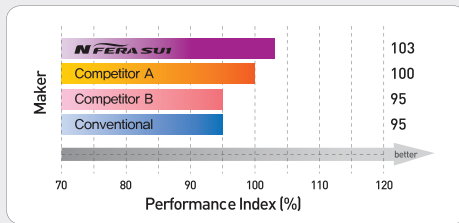


Performance Test Results

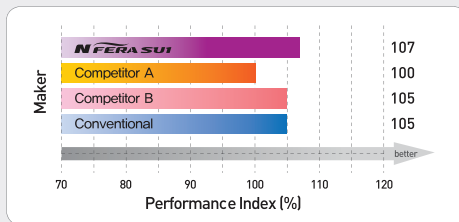
Wet Braking



Wet Handling



Tread Wear



Handling and Braking with Perfect Balance and Stability

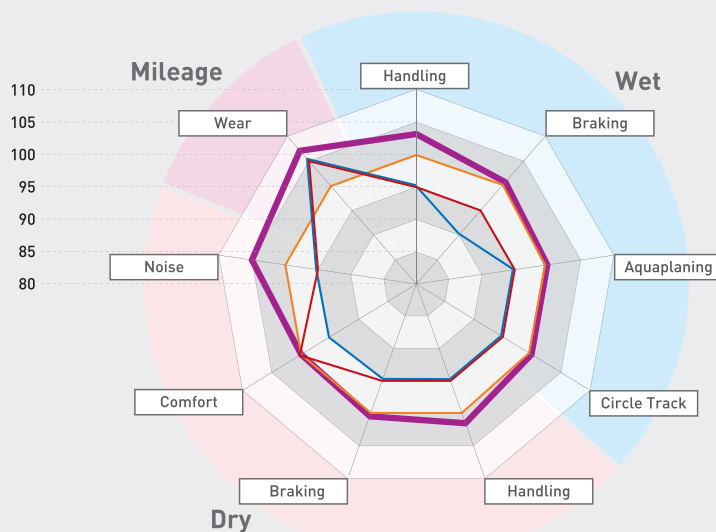
Optimized road holding performance is achieved through cutting edge POS* and HES* technologies. With this technology, improved handling and stable braking performance is enabled under every driving condition, regardless of dry or wet road surface.

- * POS : Tire Profile Optimization System
- * HES : Hydro Evacuation Simulation

Improved Tread Wear

The state of art POS technology offers homogeneous grip, reducing the irregular wear of tread and prolongs the tire life.

Performance Radar Charts



Product test results demonstrate that the **N FERASUI** exhibited far better performance than our existing product and competitors' products in terms of Braking and Handling, especially with unmatched performance in Tread Wear.

- N FERASUI
- Competitor A
- Competitor B
- Conventional

※ Test Size : 225/45R17 94W

※ Test Size : Spain Idiada Applus P/G

TTF (Texas Test Fleet, USA)

KATECH (Korean Automobile Technology Institute)

※ Test vehicle : Volkswagen Golf